

Dean's Lecture Series Presents

Assessing Ourselves

What Do Students Really Think About Democratic Learning and Writing

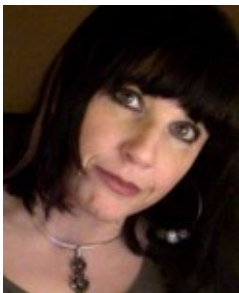
February 25, 2016

3:30 p.m.

KSU Marietta Campus

J Building Room 132

In a dialogue co-presented with two student-scholars, Dr. Bohannon will frame writing instruction through strategies of constructionist, democratic pedagogy and then talk through how colleagues across the University can integrate these practices into their own teaching. Then, she will describe an insightful, research study conducted with first-year students at KSU, discussing techniques with two former students, who will reflect on their own experiences with interdisciplinary teaching strategies. Together, the three presenters will draw conclusions about the effectiveness of multimodal composition based on students' attitudes -- including what worked, what didn't, and how to move forward in concert with students on sourcing assignments aligned with learning outcomes.



Presented by:
Jeanne Bohannon
Assistant Professor of DWMA
and
Amelia Dunbar, Civil Engineering
Marissa Grant, Civil Engineering

